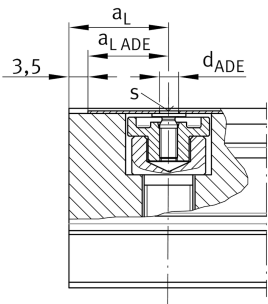
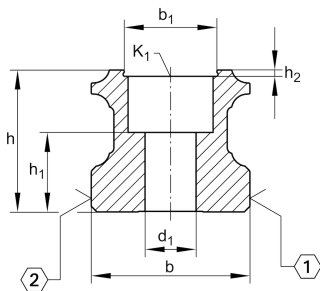
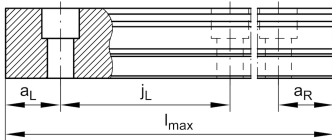
**TKSD45-ADE** [↗](#)

Carril perfilado

Guideways for six-row linear recirculating ball bearing and guideway assembly, with slot covering strip, TKSD...-ADE

Información técnica



Variante de su producto actual

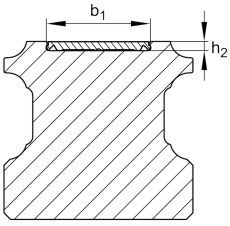
Size code	45	
Longitud	~6000	
Guideway design	ADE	For stainless steel cover strip, reusable, can be slid into place

Medidas principales y datos de rendimiento

h	37,2 mm	Height
b	45 mm	Width
Tol b	-0,005 mm	Tolerancia superior
Tol b	-0,035 mm	Lower tolerance
≈m	11,3 kg/m	Peso

Medidas de montaje

K ₁	M12	Fixing screws (DIN ISO 4762-12.9)
K ₁ M _A	140 Nm	Tightening torque
d ₁	13,4 mm	Diámetro del agujero



Medidas

l_{max}	5.985 mm	Max length single piece guideway
$a_{L min}$	20 mm	Distance
$a_{L max}$	94 mm	Distance
$a_{R min}$	20 mm	
$a_{R max}$	94 mm	
j_L	105 mm	Increment
h_1	18,7 mm	Longitud
Tol h_1	0,5 mm	Tolerancia superior
Tol h_1	-0,5 mm	Lower tolerance
h_2	1,1 mm	Profundidad
b_1	22 mm	Anchura
d_{ADE}	3,9 mm	Bore diameter
s	0,6 mm	Thickness

Información adicional

KWSE45...	Usable carriage(s)
KUSE45...	Usable linear systems