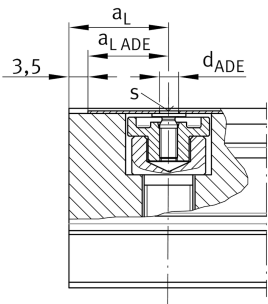
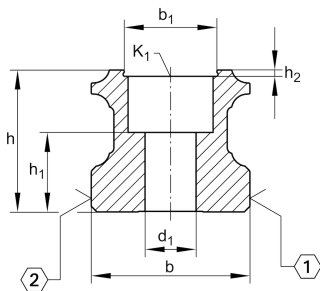
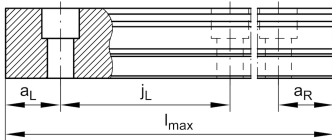
**TKSD25-ADE** [↗](#)

## Carril perfilado

Guideways for six-row linear recirculating ball bearing and guideway assembly, with slot covering strip, TKSD...-ADE

## Información técnica



## Variante de su producto actual

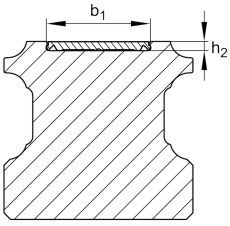
Size code	25	
Longitud	~6000	
Guideway design	ADE	For stainless steel cover strip, reusable, can be slid into place

## Medidas principales y datos de rendimiento

h	21,7 mm	Height
b	23 mm	Width
Tol b	-0,005 mm	Tolerancia superior
Tol b	-0,035 mm	Lower tolerance
≈m	3,1 kg/m	Peso

## Medidas de montaje

K <sub>1</sub>	M6	Fixing screws (DIN ISO 4762-12.9)
K <sub>1</sub> M <sub>A</sub>	17 Nm	Tightening torque
d <sub>1</sub>	6,8 mm	Diámetro del agujero



### Medidas

$l_{max}$	6.000 mm	Max length single piece guideway
$a_{L min}$	20 mm	Distance
$a_{L max}$	53 mm	Distance
$a_{R min}$	20 mm	
$a_{R max}$	53 mm	
$j_L$	60 mm	Increment
$h_1$	11,2 mm	Longitud
Tol $h_1$	0,5 mm	Tolerancia superior
Tol $h_1$	-0,5 mm	Lower tolerance
$h_2$	1,1 mm	Profundidad
$b_1$	13 mm	Anchura
$d_{ADE}$	3,9 mm	Bore diameter
$s$	0,6 mm	Thickness

### Información adicional

KWSE25	Usable carriage(s)
KUSE25	Usable linear systems