**KUVE25-B-SNL** [↗](#)

Sistema con recirculación a bolas

Carriages KWVE...-B-SNL, narrow, low, long carriage, four-row

Información técnica

Variante de su producto actual

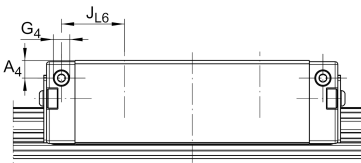
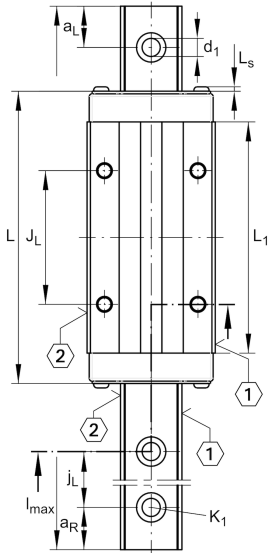
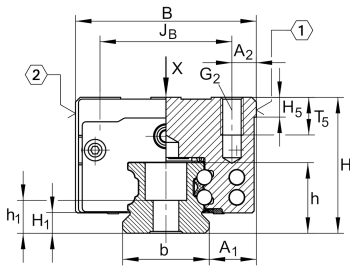
| | | |
|-----------------|-----|-----------------------------|
| Size code | 25 | |
| Carriage design | SNL | Carro estrecho, bajo, largo |
| Version | B | |

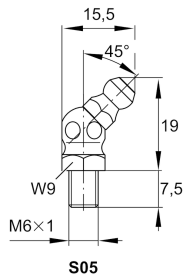
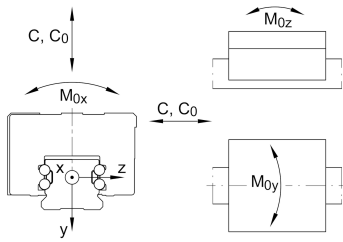
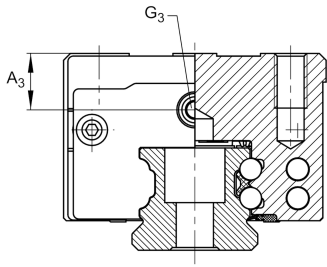
Medidas principales

| | | |
|-----------|----------|----------------------------------|
| l_{max} | 5.880 mm | Max length single piece guideway |
| H | 31 mm | Altura sistema |
| B | 48 mm | Width carriage |
| L | 109,1 mm | Overall length carriage |

Datos técnicos

| | | |
|----------|----------|---|
| C | 23.400 N | Capacidad de carga dinámica |
| C_0 | 54.000 N | Static load rating |
| M_{0x} | 745 Nm | Capacidad de momento estático momento del eje X |
| M_{0y} | 825 Nm | Capacidad de momento estático del eje Y |
| M_{0z} | 825 Nm | Capacidad de momento estático del eje Z |



**Medidas de montaje**

| | | |
|----------------------------|-----------|---------------------------|
| A ₁ | 12,5 mm | |
| J _B | 35 mm | |
| b | 23 mm | Anchura de la guía |
| Tol _b | -0,005 mm | Tolerancia superior |
| Tol _b | -0,03 mm | Lower tolerance |
| A ₂ | 6,5 mm | |
| L ₁ | 86,5 mm | |
| L _s | 1,65 mm | |
| J _L | 50 mm | |
| j _L | 60 mm | |
| a _{L min} | 20 mm | |
| a _{L max} | 53 mm | |
| a _{R min} | 20 mm | |
| a _{R max} | 53 mm | |
| H ₁ | 5,1 mm | |
| H ₅ | 5,25 mm | |
| T ₅ | 7,5 mm | |
| h | 18,7 mm | |
| h ₁ | 8,2 mm | |
| G ₂ | M6 | Fixing screws |
| G _{2 MA} | 17 Nm | Maximum tightening torque |
| K ₁ | M6 | Fixing screws |
| K _{1 MA} | 17 Nm | Maximum tightening torque |
| d ₁ | 6,8 mm | |
| A ₃ | 6 mm | |
| G ₃ | M6 | |
| t _{G₃} | 7 mm | |
| A ₄ | 4 mm | |
| G ₄ | M3 | |



Ver detalles del producto en Medias

11.11.2025, 17:04:58 UTC

SCHAEFFLER

Productos relacionados

KWVE25-B-SNL

Compatible with the following carriage

TKVD25

Suitable Guide Rail