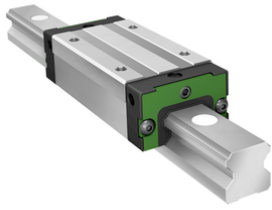




### KLLT30-H [↗](#)

Sistema con recirculación a bolas

High four-row linear recirculating ball bearing carriage with standard end plate and guideway assembly



## Información técnica

### Variante de su producto actual

Size code	30	
Carriage design	H	High design

### Medidas principales y datos de rendimiento

$l_{max}$	3.840 mm	Max length single piece guideway
H	45 mm	Altura sistema
B	60 mm	Width carriage
L	100,4 mm	Overall length carriage
$L_S$	-0,5 mm	
C	27.500 N	Capacidad de carga dinámica
$C_0$	49.500 N	Capacidad de carga estática
$M_{0x}$	790 Nm	Static moment rating about X-axis
$M_{0y}$	540 Nm	Static moment rating about Y-axis
$M_{0z}$	540 Nm	Static moment rating about Z-axis
$M_{0x}$	406 Nm	Dynamic moment rating about X-axis
$M_{0y}$	493 Nm	Dynamic moment rating about Y-axis
$M_{0z}$	493 Nm	Dynamic moment rating about Z-axis
$\approx m$	19,34 kg	Peso

