

## LFDL52-B [↗](#)

Carro

bogie carriage

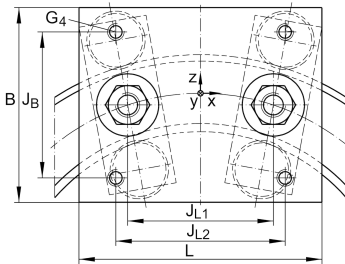
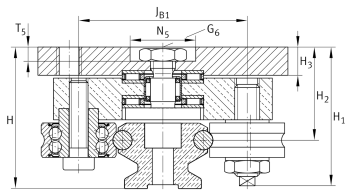
### Información técnica

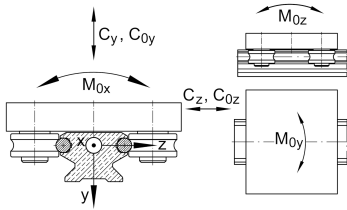
#### Variante de su producto actual

Size code	52
Setting	B

#### Medidas principales y datos de rendimiento

H <sub>1</sub>	65,1 mm	
B	120 mm	
L	150 mm	
≈m	2,5 kg	Peso





### Medidas de montaje

G 4	M10	
G 6	M10	
H	66,1 mm	Total height of carriage and rail at LFS, -C, -CE, -CEE, -E, -EE, -N, -NZZ
H 2	41 mm	
H 2 Tol	0,3	
H 2 Tol	0	
H 3	11 mm	
J B	90 mm	
J B1	83 mm	
J L1	76 mm	
J L2	90 mm	
N 5	26 mm	
T 5	6 mm	

### Medidas principales

M A	40 Nm	Tightening torque (standard version)
C y	10.000 N	Basic dynamic load rating in y-direction
C 0y	5.200 N	Basic static load rating in y-direction
C z	16.800 N	Basic dynamic load rating in z-direction
C 0z	10.000 N	Basic static load rating in z-direction
M 0x	110 Nm	Static moment about X-axis
M 0y	380 Nm	Static moment about Y-axis
M 0z	200 Nm	Static moment about Z-axis

### Productos relacionados

LFR	LFR5201-10-2Z	Used track roller
LFS	LFS52	Guide rail