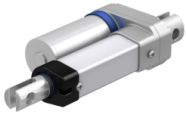




CAHB-10-A2A-100209-AAAA0B-000 [↗](#)



Información técnica

Medidas principales y datos de rendimiento

	3,5 A	Current Consumption
	25 %	Duty at maximum force
	240 N	Force
	12 V DC	Motor voltage DC
L ₁	209 mm	Retracted Length
	100 mm	Stroke
	66	Water and dust protection (IP Class)
	30 mm/s	Speed at full load
	24 mm/s	Speed no load

Funciones

yes	Self locking at maximum force
-----	-------------------------------