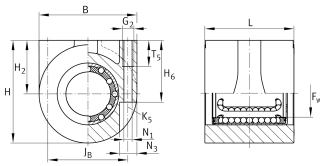
**KGHA25-PP** [↗](#)

Linear Ball Bearing and Housing Unit

Linear Ball Bearing and Housing Units,
Sealed, Greased, Corrosion-resistant Design
Possible

Información técnica



Variante de su producto actual

| | | |
|-----------|----|--------|
| Size code | 25 | |
| Seal | PP | Sealed |

Medidas principales y datos de rendimiento

| | | |
|----------------|----------|-----------------------------|
| H | 57,5 mm | Altura |
| B | 55 mm | Anchura |
| L | 49 mm | Longitud |
| | + 0,5 mm | Tolerance |
| C | 2.280 N | Capacidad de carga dinámica |
| C ₀ | 1.670 N | Capacidad de carga estática |
| ≈m | 0,496 kg | Peso |

Medidas de montaje

| | | |
|--------------------|----------|-----------|
| H ₆ | 35 mm | |
| T ₅ | 15 mm | |
| J _B | 46 mm | |
| Tol J _B | ± 0,1 mm | Tolerance |
| G ₂ | M6 | |
| N ₁ | 5,1 mm | |
| N ₃ | 8,1 mm | |
| K ₅ | M4 | |



Medidas

| | | |
|--------------------|------------|------------------|
| F _w | 25 mm | Diámetro del eje |
| H ₂ | 30 mm | centro del eje |
| Tol H ₂ | ± 0,015 mm | Tolerance |