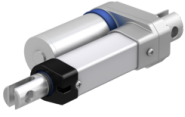




## CAHB-10-A5A-066260-AAAA0A-000 [↗](#)



### Información técnica

#### Medidas principales y datos de rendimiento

	2,8 A	Current Consumption
	25 %	Duty at maximum force
	1.000 N	Force
	12 V DC	Motor voltage DC
L <sub>1</sub>	260 mm	Retracted Length
	66 mm	Stroke
	66	Water and dust protection (IP Class)
	8 mm/s	Speed at full load
	6 mm/s	Speed no load

#### Funciones

yes	Self locking at maximum force
-----	-------------------------------