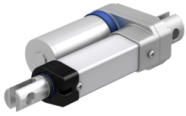




CAHB-10-A5A-050158-ABBB0F-000 [↗](#)



Información técnica

Medidas principales y datos de rendimiento

	2,8 A	Current Consumption
	25 %	Duty at maximum force
	1.000 N	Force
	12 V DC	Motor voltage DC
L ₁	158 mm	Retracted Length
	50 mm	Stroke
	66	Water and dust protection (IP Class)
	8 mm/s	Speed at full load
	6 mm/s	Speed no load

Funciones

yes	Self locking at maximum force
-----	-------------------------------