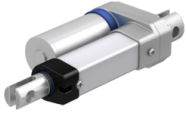




## CAHB-10-B4A-200311-ABBAHB-000 [↗](#)



### Información técnica

#### Medidas principales y datos de rendimiento

|                |         |                                      |
|----------------|---------|--------------------------------------|
|                | 1,8 A   | Current Consumption                  |
|                | 25 %    | Duty at maximum force                |
|                | 750 N   | Force                                |
|                | 24 V DC | Motor voltage DC                     |
| L <sub>1</sub> | 311 mm  | Retracted Length                     |
|                | 200 mm  | Stroke                               |
|                | 66      | Water and dust protection (IP Class) |
|                | 10 mm/s | Speed at full load                   |
|                | 8 mm/s  | Speed no load                        |

#### Funciones

|     |                               |
|-----|-------------------------------|
| yes | Self locking at maximum force |
|-----|-------------------------------|