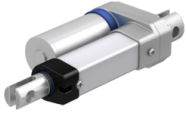




CAHB-10-A3A-300413-AAAA0A-000 [↗](#)



Información técnica

Medidas principales y datos de rendimiento

	3,2 A	Current Consumption
	25 %	Duty at maximum force
	500 N	Force
	12 V DC	Motor voltage DC
L ₁	413 mm	Retracted Length
	300 mm	Stroke
	66	Water and dust protection (IP Class)
	16 mm/s	Speed at full load
	13 mm/s	Speed no load

Funciones

yes	Self locking at maximum force
-----	-------------------------------