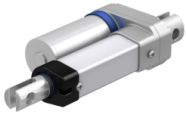




CAHB-10-B5A-150281-ACCA0D-000 [↗](#)



Información técnica

Medidas principales y datos de rendimiento

	1,6 A	Current Consumption
	25 %	Duty at maximum force
	1.000 N	Force
	24 V DC	Motor voltage DC
L ₁	281 mm	Retracted Length
	150 mm	Stroke
	66	Water and dust protection (IP Class)
	8 mm/s	Speed at full load
	6 mm/s	Speed no load

Funciones

yes	Self locking at maximum force
-----	-------------------------------