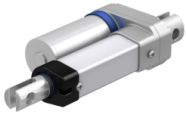




CAHB-10-B3A-100264-ACCAPF-000 [↗](#)



Información técnica

Medidas principales y datos de rendimiento

| | | |
|----------------|---------|--------------------------------------|
| | 1,8 A | Current Consumption |
| | 25 % | Duty at maximum force |
| | 500 N | Force |
| | 24 V DC | Motor voltage DC |
| L ₁ | 264 mm | Retracted Length |
| | 100 mm | Stroke |
| | 66 | Water and dust protection (IP Class) |
| | 16 mm/s | Speed at full load |
| | 13 mm/s | Speed no load |

Funciones

| | |
|-----|-------------------------------|
| yes | Self locking at maximum force |
|-----|-------------------------------|