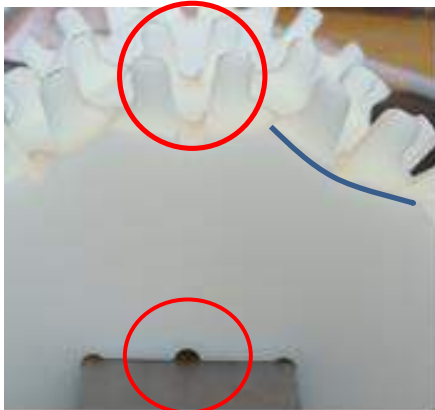


HabasitLINK®

Installation instructions for belt type M3398

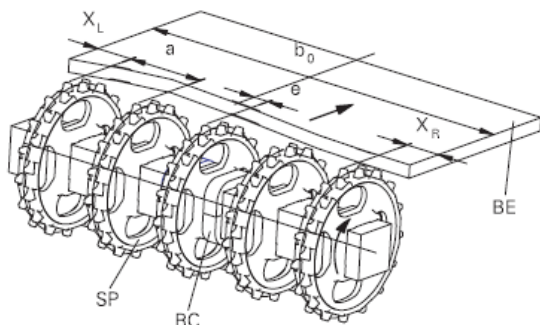
Please find full installation guide on www.habasit.com



Sprocket alignment on the shafts:

Corresponding teeth axial aligned, check by tooth orientation and mark on shaft.

Sprockets with concaved minor diameter can run on both belt top and bottom sides.



Sprockets Positioning:

At belt edge place sprockets according X_L and X_R distances.

In belt center place sprockets between min. and max. spacing (a).

Offset (e) is given by shaft design.

Fix only the sprocket in the center with small clearance.

Ensure the engagement is not at the junction of two modules (check over two rows).

Sprocket distance for **standard drive** configuration, sprockets engage at bottom side of the belt:

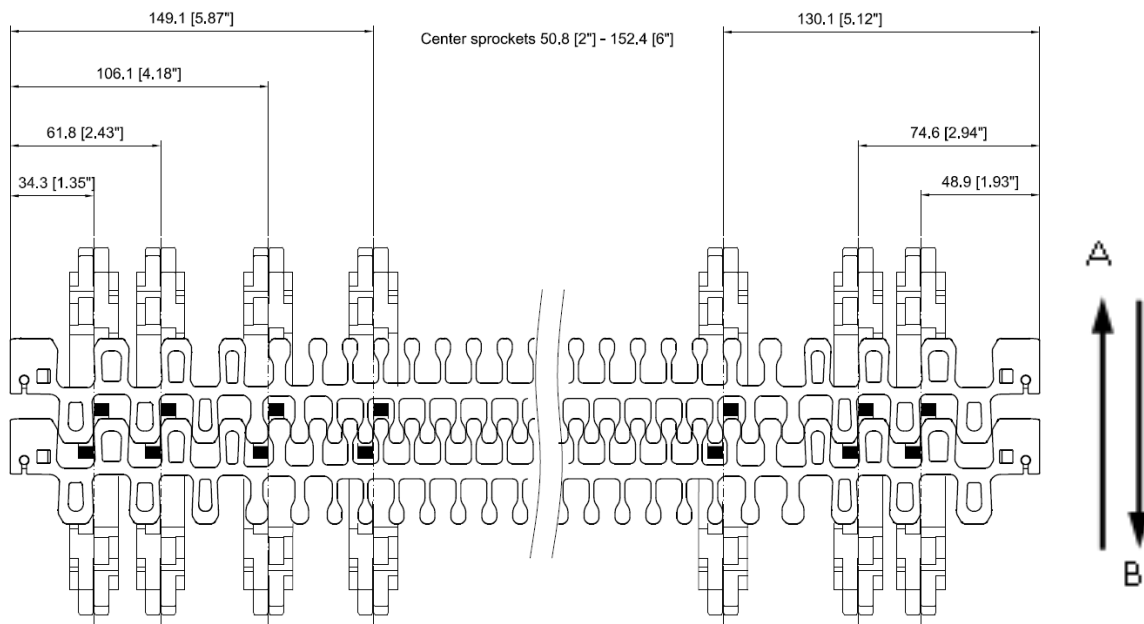
Belt type	Sprocket spacing a		Optional distances of the sprockets at belt edges						
	minimal	maximal	X_L from belt edge				X_R from belt edge		
	mm <i>inch</i>	mm <i>inch</i>	mm <i>inch</i>	mm <i>inch</i>	mm <i>inch</i>	mm <i>inch</i>	mm <i>inch</i>	mm <i>inch</i>	mm <i>inch</i>
M3398	50.8 2	152.4 6	*34.3 *1.35	*61.8 *2.43	106.1 4.18	149.3 5.88	*48.9 *1.93	*74.6 *2.94	130.1 5.12

X_L and X_R are related to running direction A and are inverse for the running direction B

*Always install the two first sprockets from belt edge.

Place sprocket in the center at a multiple of 12.7 mm (0.5").

Sprocket positions and running direction for Standard drive:

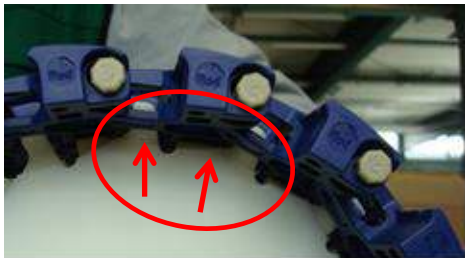


Belt running direction:

This belt can run in both directions but it might be given by the shaft design with fixed sprocket and offset (e). Install the belt whenever possible with rod head on the outside of the curve.

Preferred running direction for radius and spiral conveyors is direction A.

Respect edge distance X_L and X_R depending on running direction and drive option (top or bottom).



Check proper sprocket engagement:

The sprocket teeth must properly engage in the belt. Belt bottom side is in contact with the sprocket minor diameter. Check proper sprocket engagement from belt surface.

Sprocket distance for **Top side drive** configuration, sprockets engage at surface side of the belt:

Belt type	Sprocket spacing a		Optional distances of the sprockets at belt edges						
	minimal	maximal	X_L from belt edge			X_R from belt edge			
	mm <i>inch</i>	mm <i>inch</i>	mm <i>inch</i>	mm <i>inch</i>	mm <i>inch</i>	mm <i>inch</i>	mm <i>inch</i>	mm <i>inch</i>	mm <i>inch</i>
M3398	50.8 2	152.4 6	*48.9 *1.93	*74.6 *2.94	130.1 5.12	*34.3 *1.35	*61.8 *2.43	106.1 4.18	149.3 5.88

X_L and X_R are related to running direction A and are inverse for the running direction B

*Always install the two first sprockets from belt edge.

Rod installation (smart fit rod retention):

Rod Ø6mm (0.22") with octagonal shaped head must have a beveled end. Install the belt with **rod head on the outside of the curve**. In case of more curves with opposite direction install belt with rod head on outside at last curve (closer to head drive), for wide belts there might be two rods per row (S-curve).



Pull belt sections together



Insert rod, for easy rod installation, rod end must be beveled.



Check if rod head is fully embedded.
Push in rod head

Rod removal (smart fit rod retention):



Rod removal by Habasit Rod Puller.

The belt must not be under tension and rod has to be pushed in direction of arrow.



Apply rod puller at rod head from the next module (see picture). Push it below rod head and in direction of arrow- Pull it out by moving the handle towards the belt.

Disclaimer

Product Application Disclaimer (valid for ALL Habasit products and mentioned on all PDS)

This disclaimer is made by and on behalf of Habasit and its affiliated companies, directors, employees, agents and contractors (hereinafter collectively "HABASIT") with respect to the products referred to herein (the "Products"). SAFETY WARNINGS SHOULD BE READ CAREFULLY AND ANY RECOMMENDED SAFETY PRECAUTIONS BE FOLLOWED STRICTLY! Please refer to the Safety Warnings herein, in the Habasit catalogue as well as installation and operating manuals. All indications / information as to the application, use and performance of the Products are recommendations provided with due diligence and care, but no representations or warranties of any kind are made as to their completeness, accuracy or suitability for a particular purpose. The data provided herein are based on laboratory application with small-scale test equipment, running at standard conditions, and do not necessarily match product performance in industrial use. New knowledge and experience may lead to re-assessments and modifications within a short period of time and without prior notice. EXCEPT AS EXPLICITLY WARRANTED BY HABASIT, WHICH WARRANTIES ARE EXCLUSIVE AND IN LIEU OF ALL OTHER WARRANTIES, EXPRESS OR IMPLIED, THE PRODUCTS ARE PROVIDED "AS IS". HABASIT DISCLAIMS ALL OTHER WARRANTIES, EITHER EXPRESS OR IMPLIED, INCLUDING, BUT NOT LIMITED TO, IMPLIED WARRANTIES OF MERCHANTABILITY, FITNESS FOR A PARTICULAR PURPOSE, NON-INFRINGEMENT, OR ARISING FROM A COURSE OF DEALING, USAGE, OR TRADE PRACTICE, ALL OF WHICH ARE HEREBY EXCLUDED TO THE EXTENT ALLOWED BY APPLICABLE LAW. BECAUSE CONDITIONS OF USE IN INDUSTRIAL APPLICATION ARE OUTSIDE OF HABASIT'S CONTROL, HABASIT DOES NOT ASSUME ANY LIABILITY CONCERNING THE SUITABILITY AND PROCESS ABILITY OF THE PRODUCTS, INCLUDING INDICATIONS ON PROCESS RESULTS AND OUTPUT.

